

SOURCE: ESRI, MD IMAP, MDE, DNR, BALTIMORE COUNTY, MD

POTENTIAL ALIGNMENTS

NORTH CENTRAL RAILROAD (NCR) TRAIL FEASIBILITY STUDY

BALTIMORE COUNTY, MD

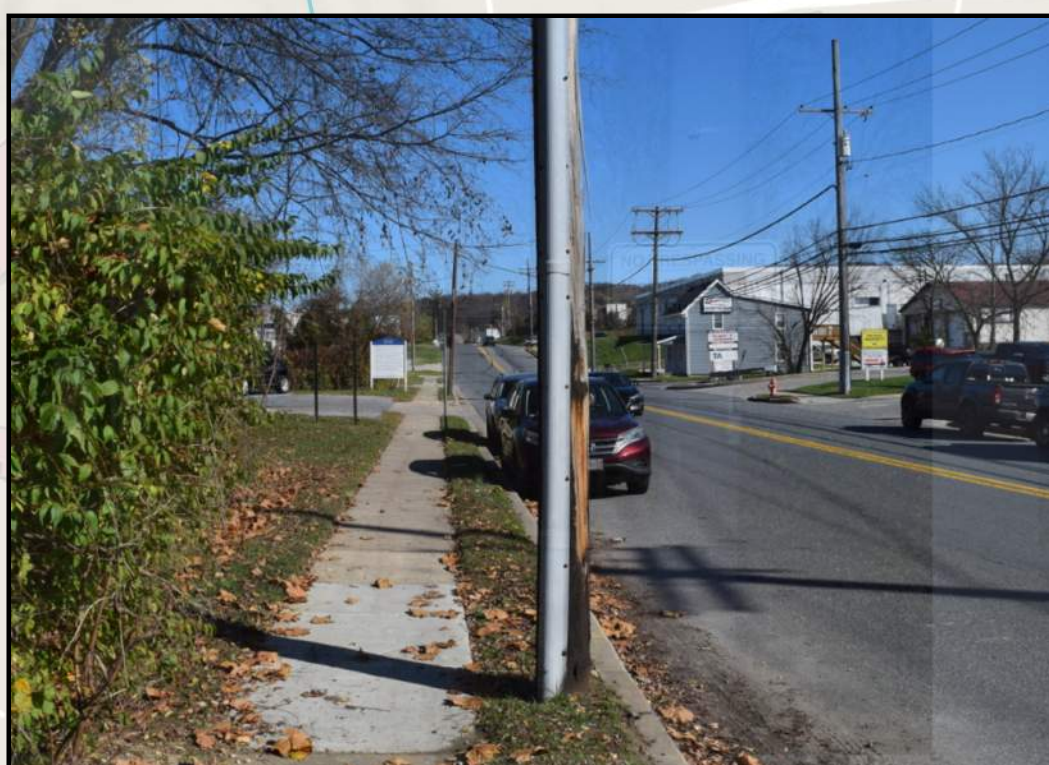
DATE: MARCH 2023



Ashland (NCR Terminus) to Warren

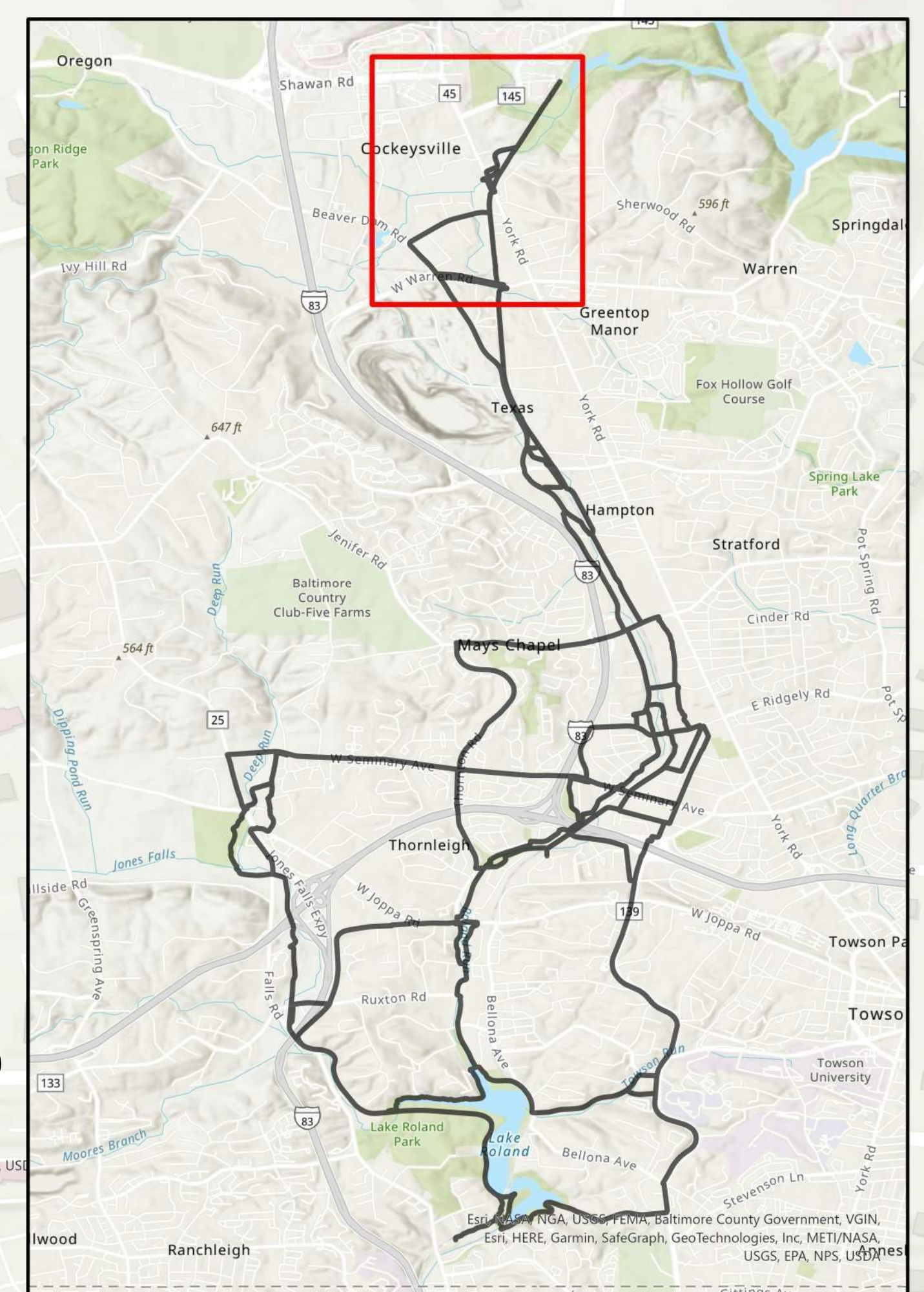
ASHLAND

EXISTING
NCR TRAIL



LEGEND

- NCR RAILROAD ROUTE
- WESTERN ROUTE
- YORK ROAD UNDERPASS
- ALIGNMENT CONNECTIONS, SEE NEXT MAP



0 250 500 1,000 Feet



SOURCE: ESRI, MD IMAP, MDE, DNR, BALTIMORE COUNTY, MD

POTENTIAL ALIGNMENTS

NORTH CENTRAL RAILROAD (NCR) TRAIL FEASIBILITY STUDY

BALTIMORE COUNTY, MD

DATE: MARCH 2023

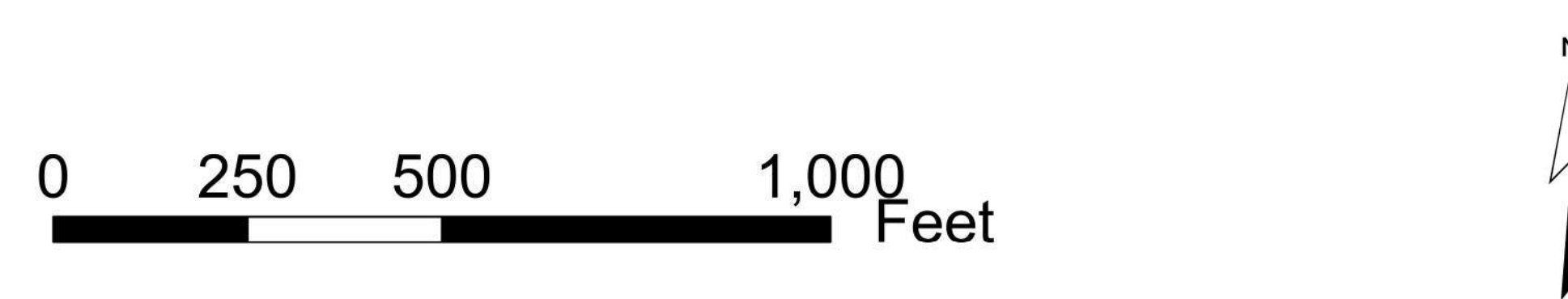
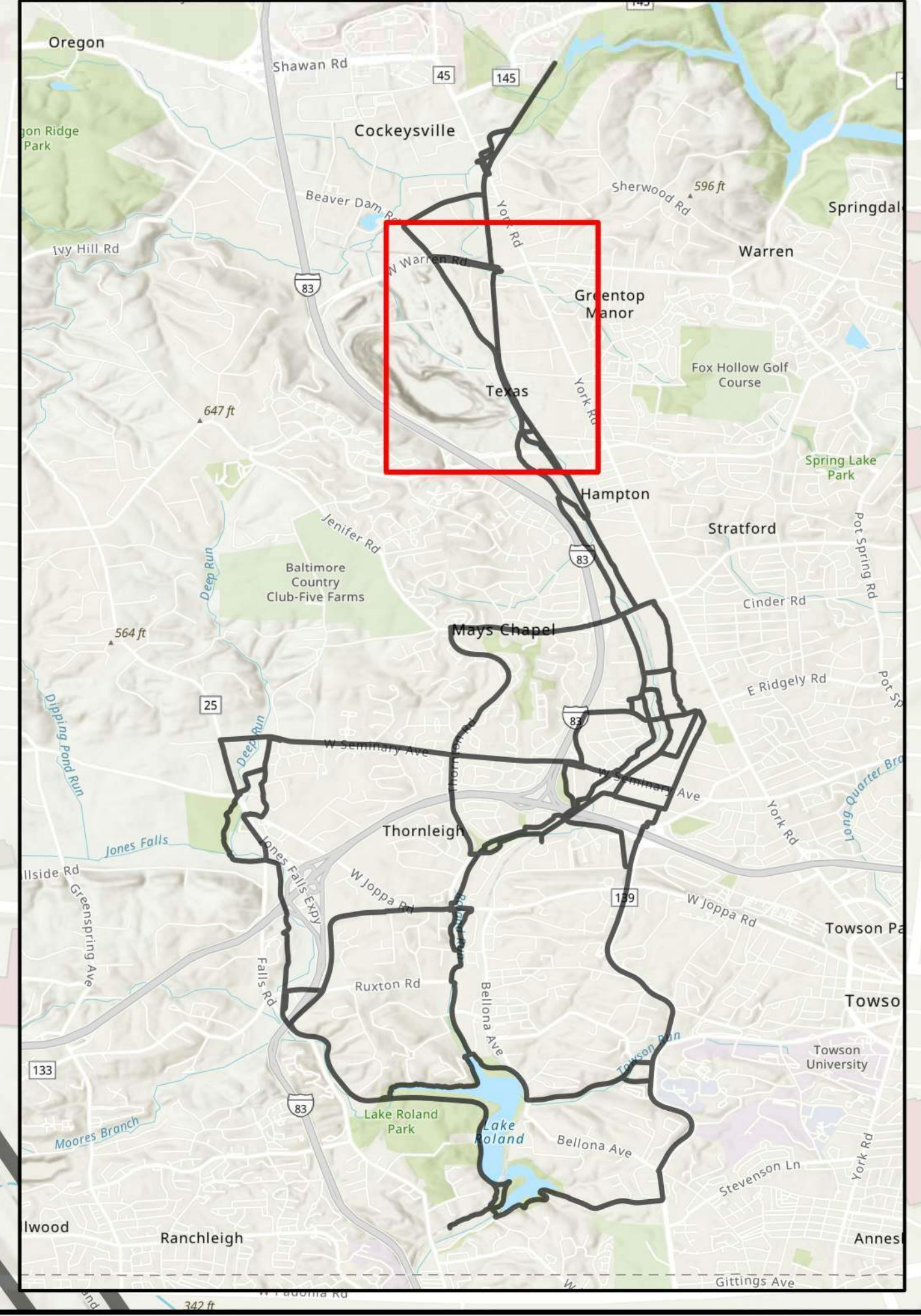


Warren to Padonia



LEGEND

- NCR RAILROAD ROUTE
- WESTERN ROUTE
- WARREN ROAD CONNECTION
- ALIGNMENT CONNECTIONS, SEE NEXT MAP



SOURCE: ESRI, MD IMAP, MDE, DNR, BALTIMORE COUNTY, MD

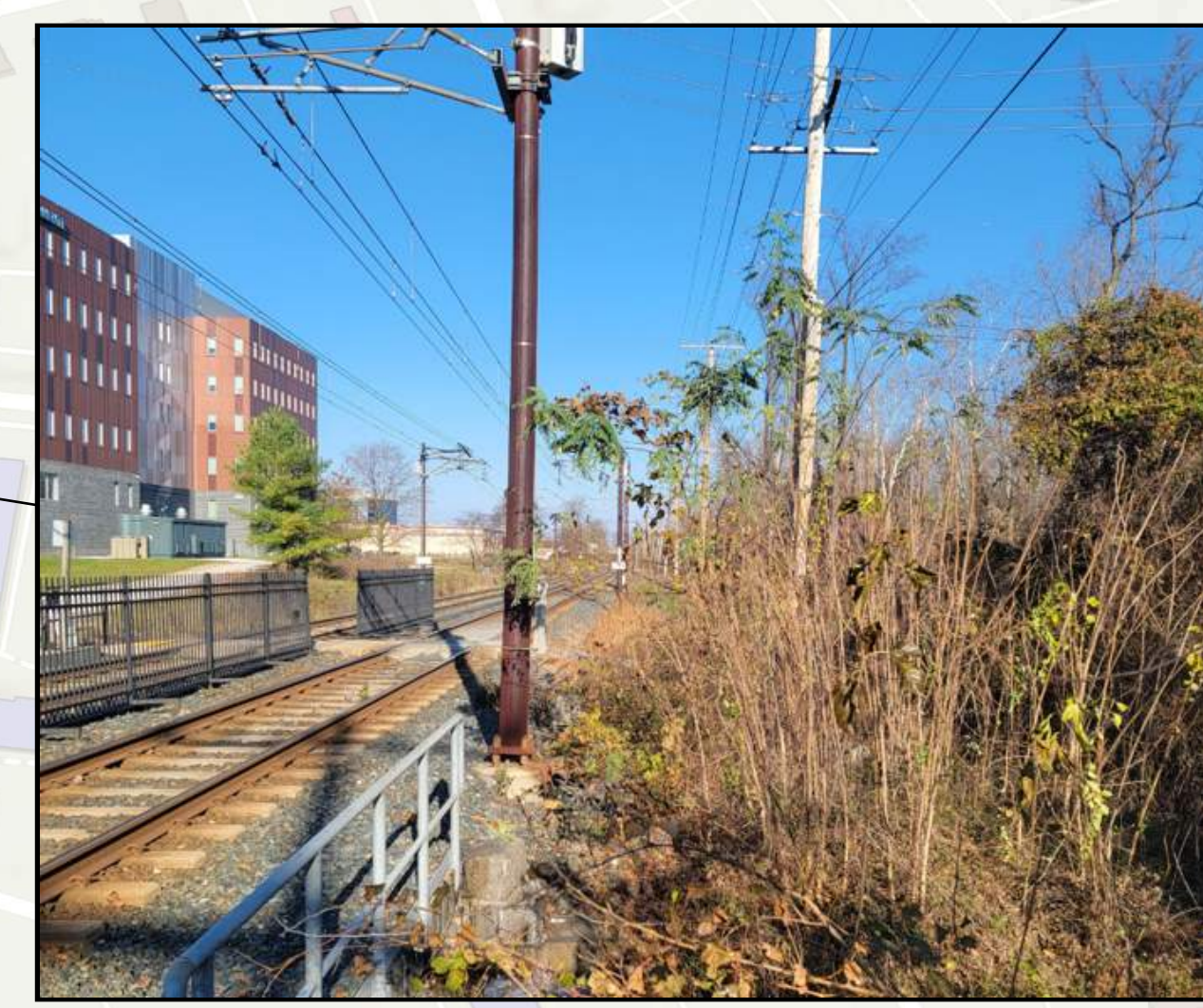
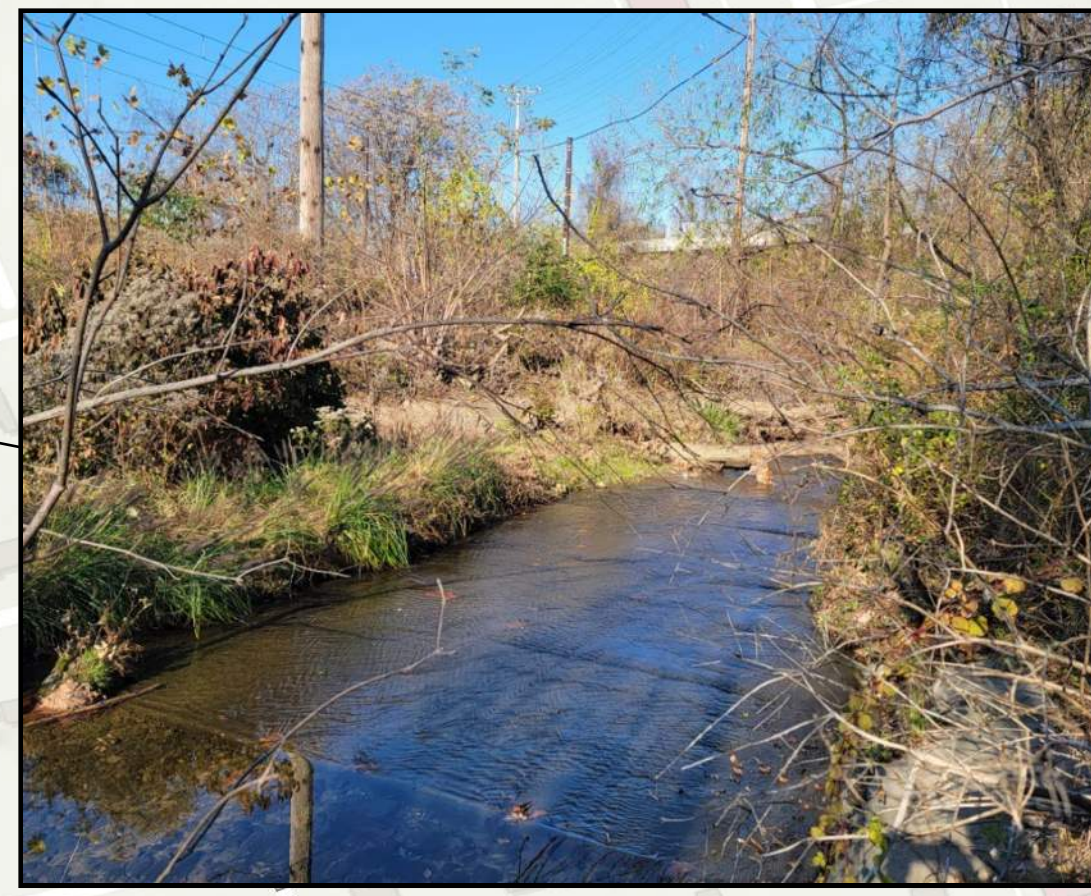
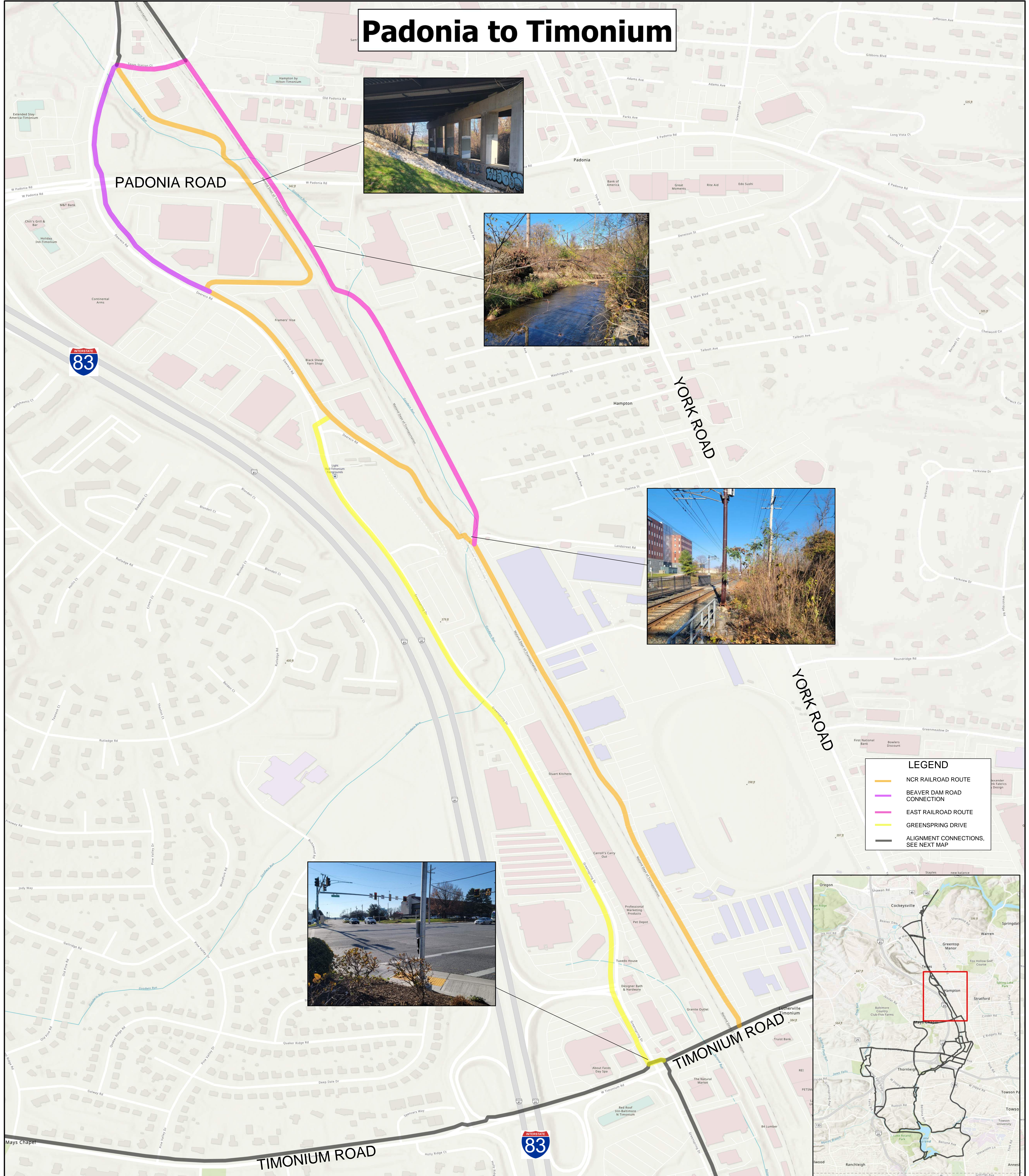
POTENTIAL ALIGNMENTS

NORTH CENTRAL RAILROAD (NCR)
TRAIL FEASIBILITY STUDY
BALTIMORE COUNTY, MD

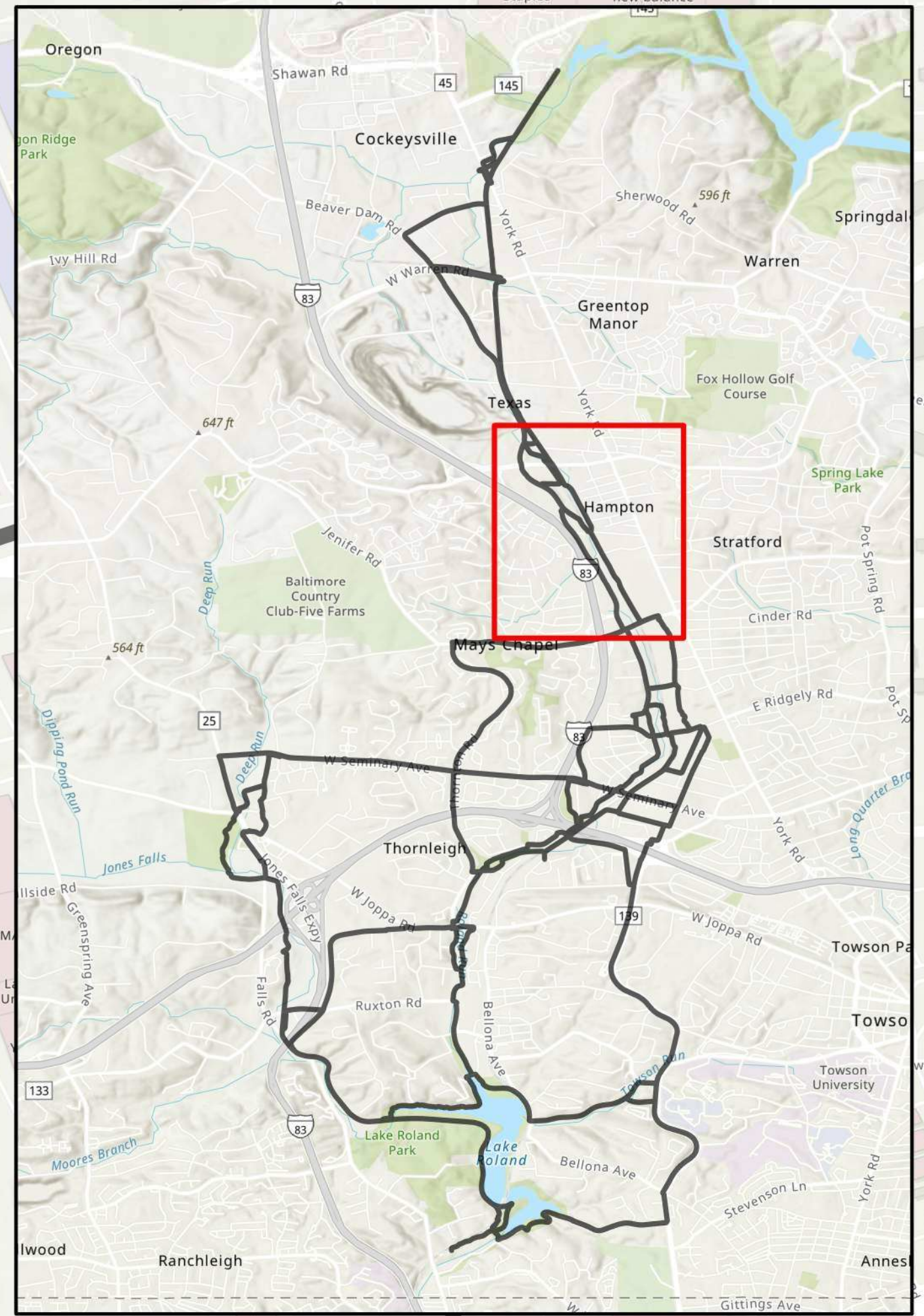
DATE: MARCH 2023



Padonia to Timonium



LEGEND	
	NCR RAILROAD ROUTE
	BEAVER DAM ROAD CONNECTION
	EAST RAILROAD ROUTE
	GREENSPRING DRIVE
	ALIGNMENT CONNECTIONS, SEE NEXT MAP



0 250 500 1,000 Feet



SOURCE: ESRI, MD IMAP, MDE, DNR, BALTIMORE COUNTY, MD

POTENTIAL ALIGNMENTS

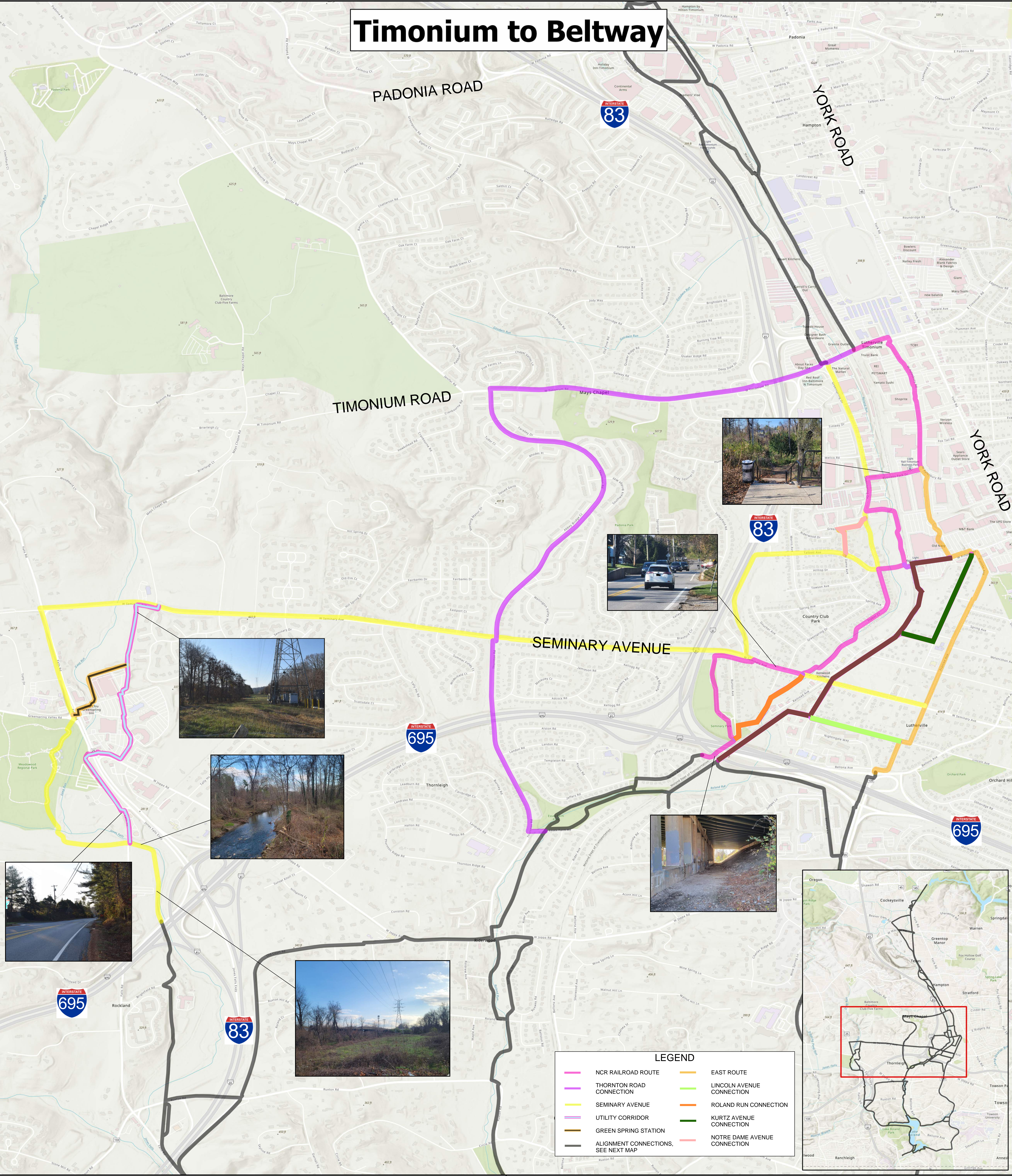
NORTH CENTRAL RAILROAD (NCR) TRAIL FEASIBILITY STUDY

BALTIMORE COUNTY, MD

DATE: MARCH 2023

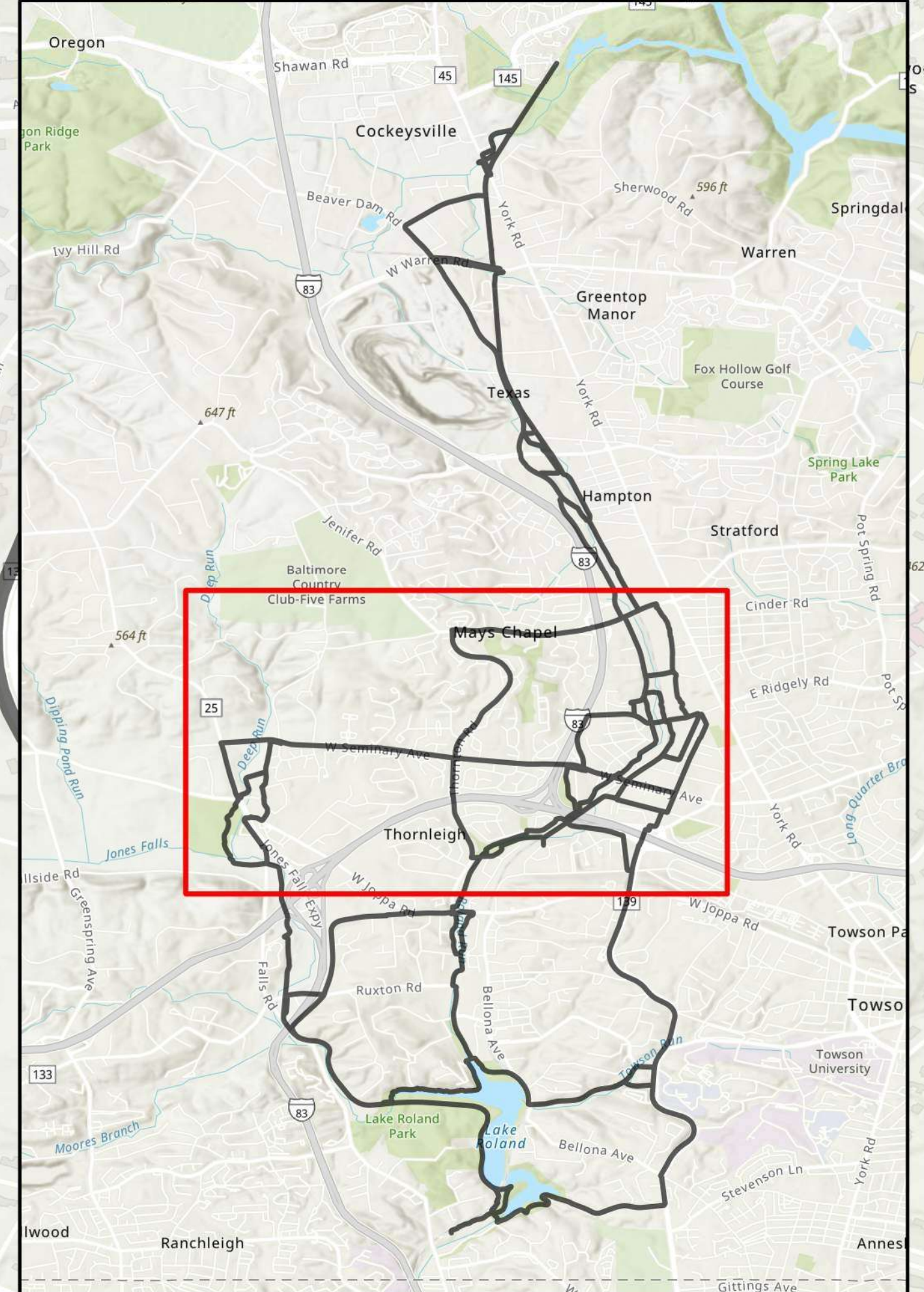


Timonium to Beltway



LEGEND

	NCR RAILROAD ROUTE		EAST ROUTE
	THORNTON ROAD CONNECTION		LINCOLN AVENUE CONNECTION
	SEMINARY AVENUE		ROLAND RUN CONNECTION
	UTILITY CORRIDOR		KURTZ AVENUE CONNECTION
	GREEN SPRING STATION		NOTRE DAME AVENUE CONNECTION
	ALIGNMENT CONNECTIONS, SEE NEXT MAP		



SOURCE: ESRI, MD IMAP, MDE, DNR, BALTIMORE COUNTY, MD

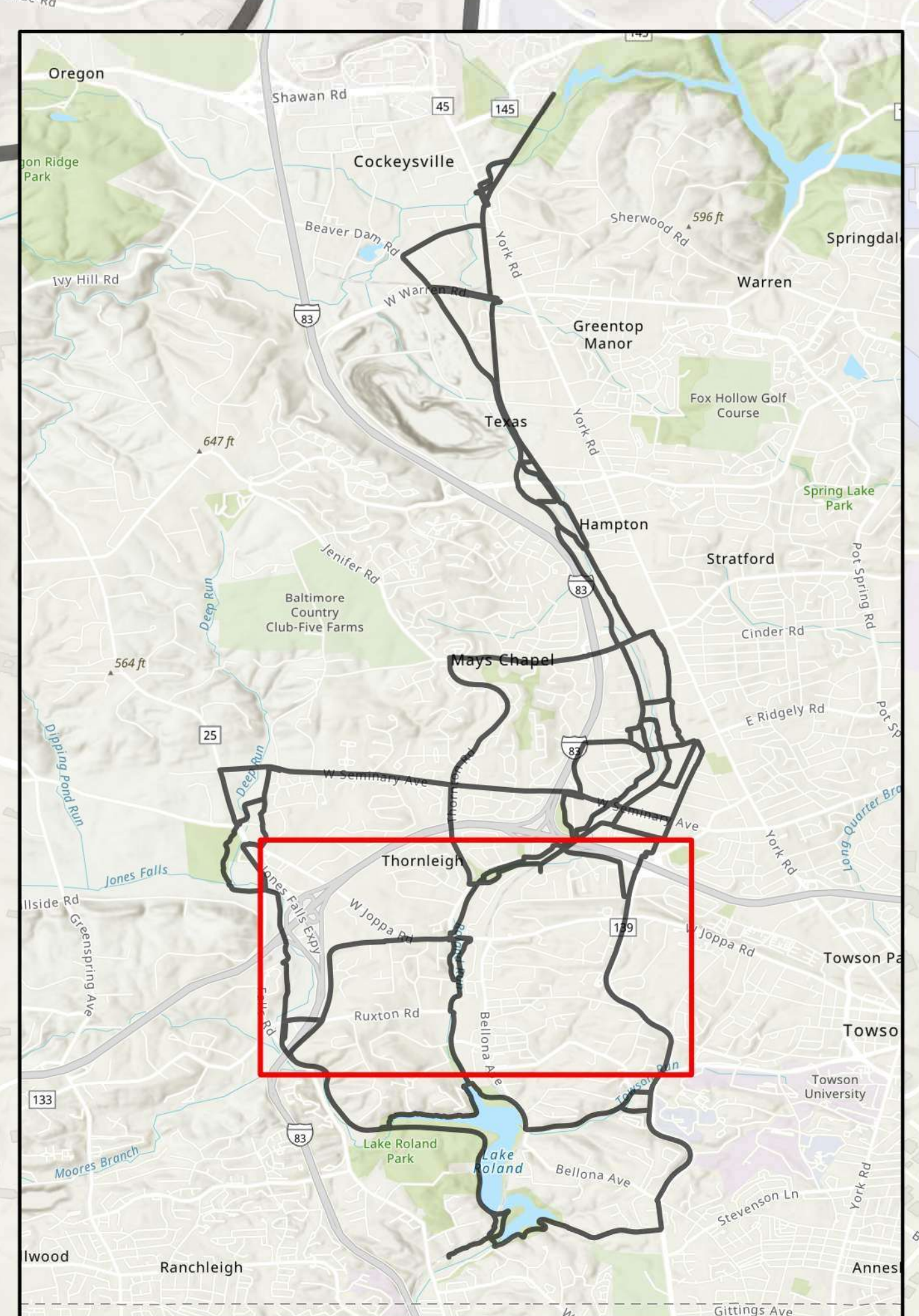
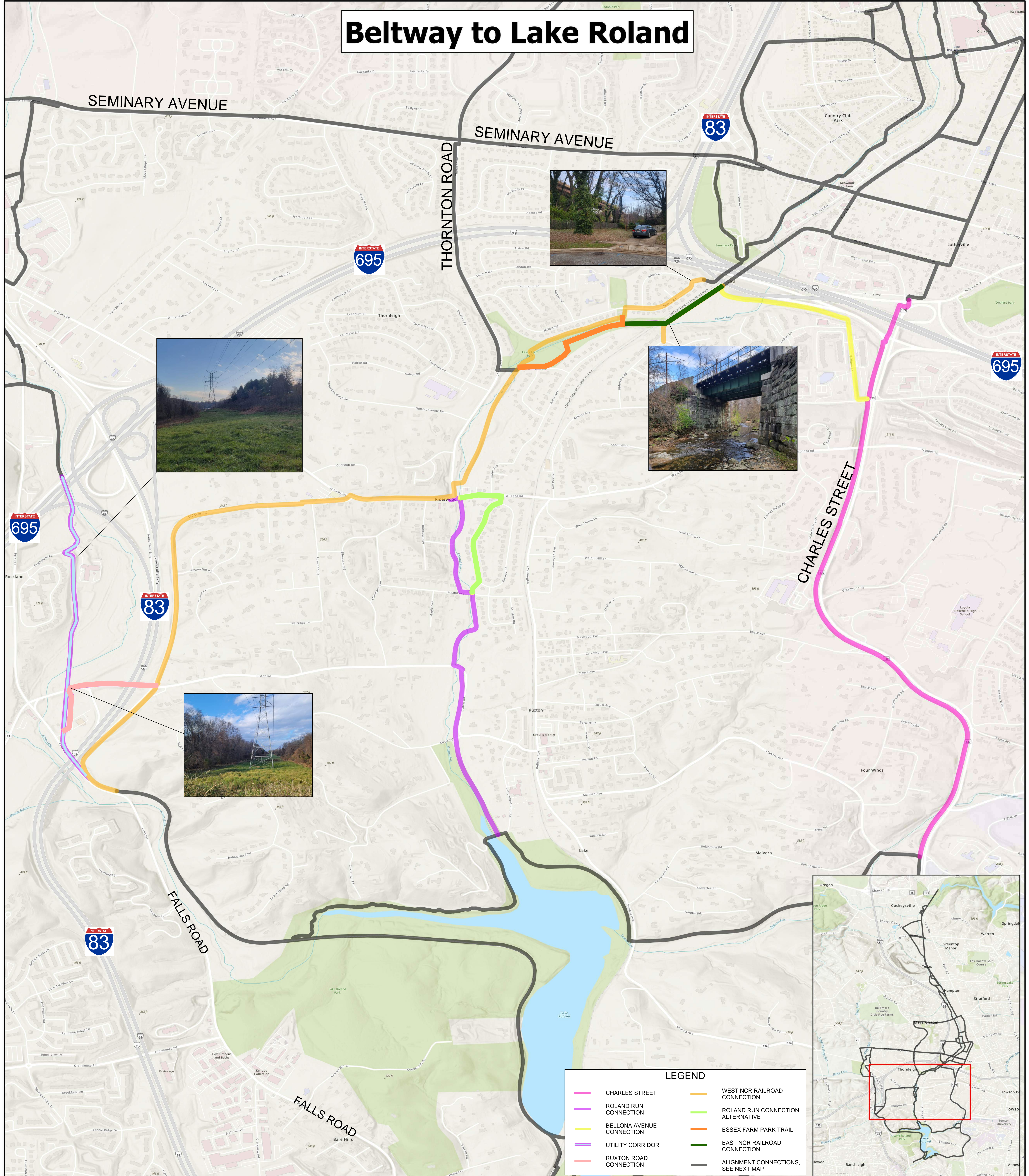
POTENTIAL ALIGNMENTS

NORTH CENTRAL RAILROAD (NCR)
TRAIL FEASIBILITY STUDY
BALTIMORE COUNTY, MD

DATE: MARCH 2023



Beltway to Lake Roland



0 500 1,000 2,000 Feet



SOURCE: ESRI, MD IMAP, MDE, DNR, BALTIMORE COUNTY, MD

POTENTIAL ALIGNMENTS

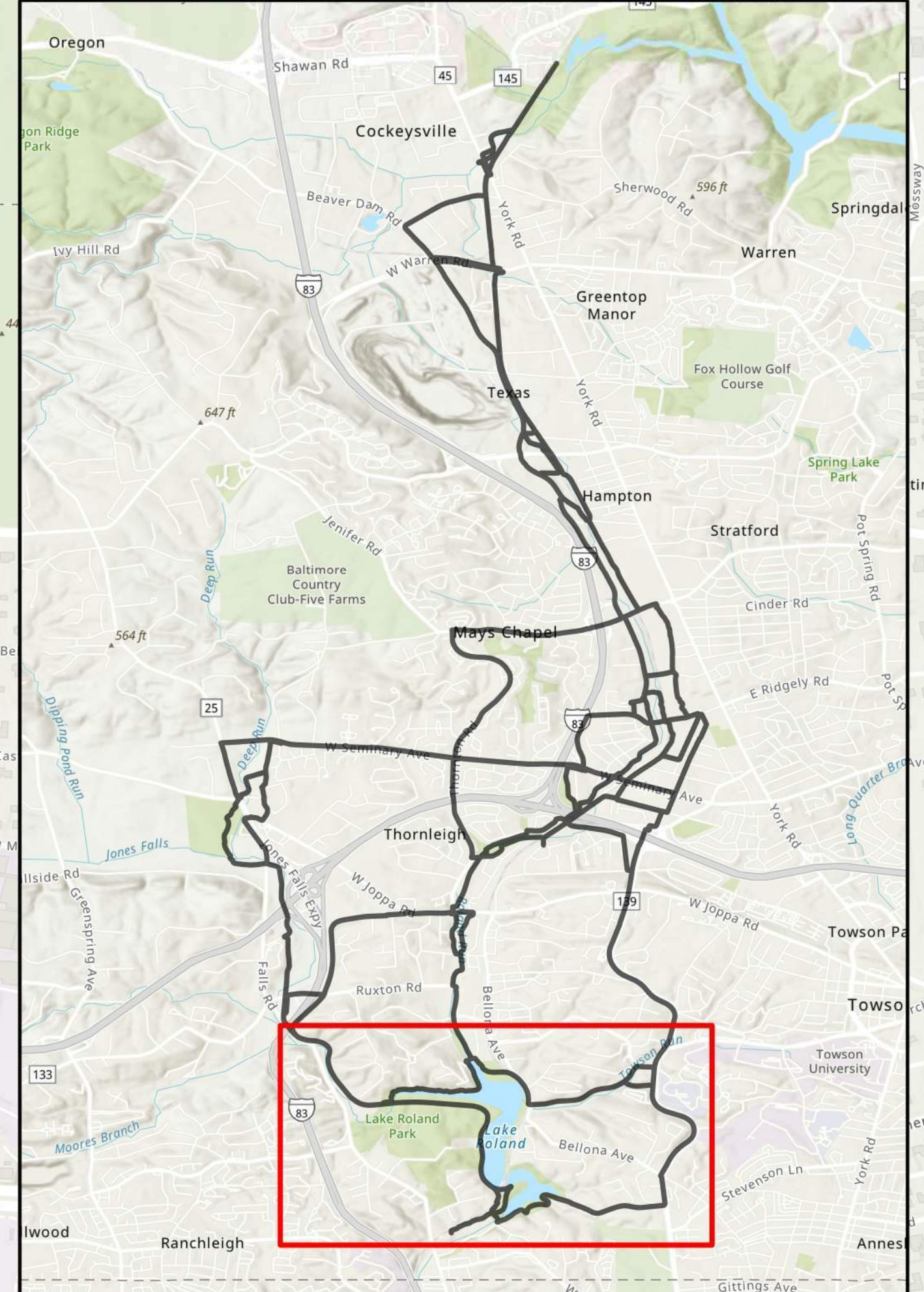
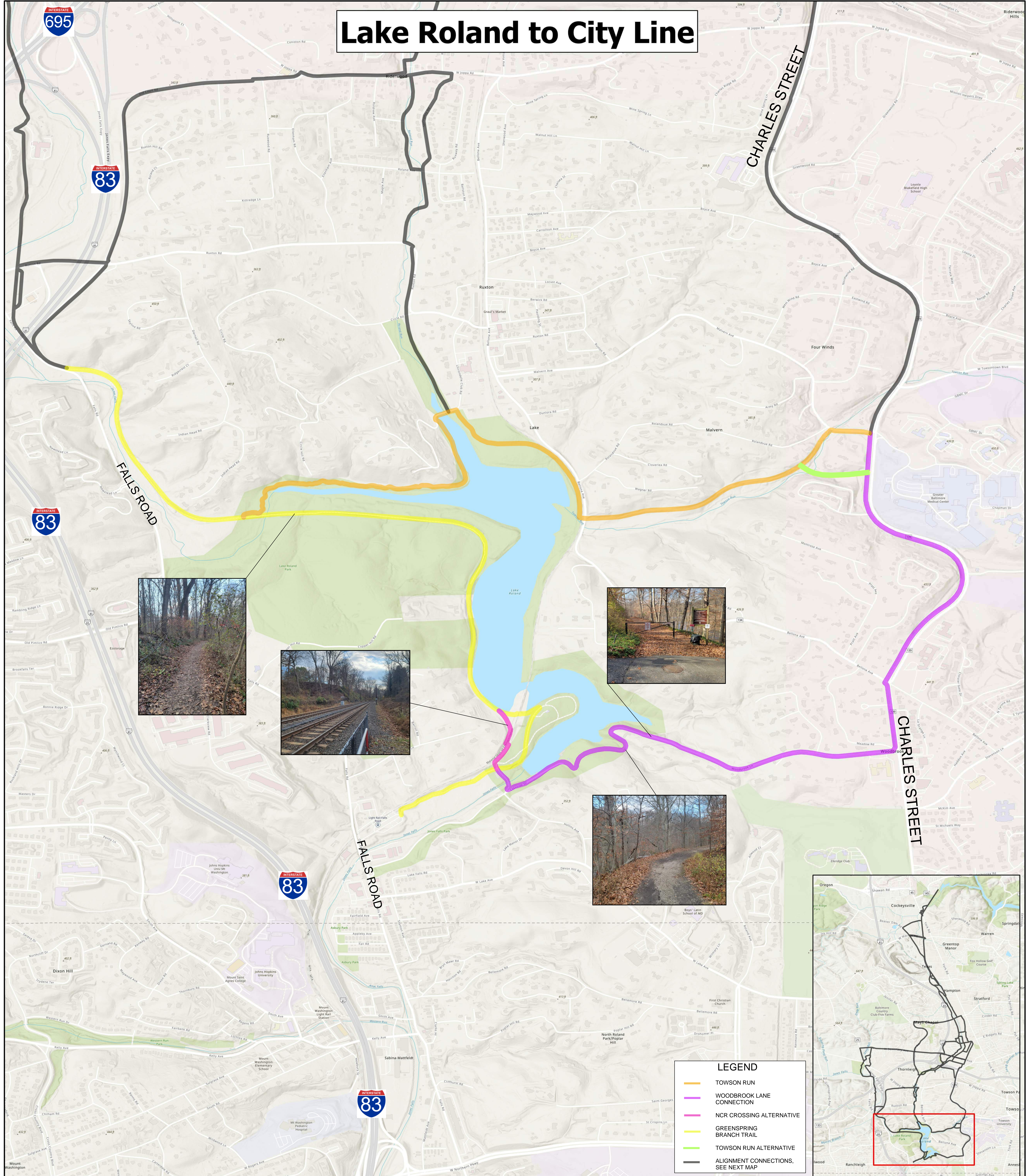
NORTH CENTRAL RAILROAD (NCR) TRAIL FEASIBILITY STUDY

BALTIMORE COUNTY, MD

DATE: MARCH 2023



Lake Roland to City Line



LEGEND	
	TOWSON RUN
	WOODBROOK LANE CONNECTION
	NCR CROSSING ALTERNATIVE
	GREENSPRING BRANCH TRAIL
	TOWSON RUN ALTERNATIVE
	ALIGNMENT CONNECTIONS. SEE NEXT MAP

0 500 1,000 2,000 Feet



SOURCE: ESRI, MD IMAP, MDE, DNR, BALTIMORE COUNTY, MD



POTENTIAL ALIGNMENTS

NORTH CENTRAL RAILROAD (NCR) TRAIL FEASIBILITY STUDY

BALTIMORE COUNTY, MD

DATE: MARCH 2023